

WILLIAM STEEL

SIGNATURE SERIES

2010 - 2020 CATALOGUE





ARTIST'S STATEMENT

From a young age I have been captivated by the wildlife that surrounded me. Raised in Botswana, I was able to explore and discover the beauty of untamed wilderness, and it sparked my love for nature. This passion for the natural world encompasses everything I do, and ultimately defines my photography.

Light is what I remember most about a moment, and I am forever striving to capture this sense of place as it interacts with a scene. Light continues to inspire the way I view the world, reinventing the way it defines a subject is a theme that runs through my portfolio.

I believe that powerful photography is a combination of beauty and intrigue. I have always tried to focus on these aspects regardless of the subject that I am photographing. I hope to highlight the art in unexpected places, and as a result, create images that encapsulate the subject's unique self.

My goal is to capture emotion, and with that, tell a story. Through my photography, I hope to inspire in others the same love I have for wildlife, inspiring and educating the future protectors of our fragile natural world.

William S.

THE CATALOGUE

The 2010-2020 signature series catalogue is the result of ten years spent exploring Southern Africa's untamed places. To celebrate this decade, I wanted to share a curated collection of work as well as their unique stories. These photographs capture a moment in time, but as experiences in my life, they represent more than just a collection of images.

The reason I waited over a decade before putting together a print catalogue, was not only because I wanted to release a portfolio of work that I am truly proud of, but also a selection of images that meet my high standard for printing. This is my wild perspective, with each and every image carefully selected for its unique view of the natural world.

In a digital world, printing, more than ever, is the true final step in the artistic process. Testing, refining and then feeling the image come back to life on paper, as a moment encapsulated in time, is truly a breathtaking journey.

This portfolio of unique and personal images is designed to be loved, cherished, and collected.

To find out more information about each print, simply click on the image and you will be directed to my online store.

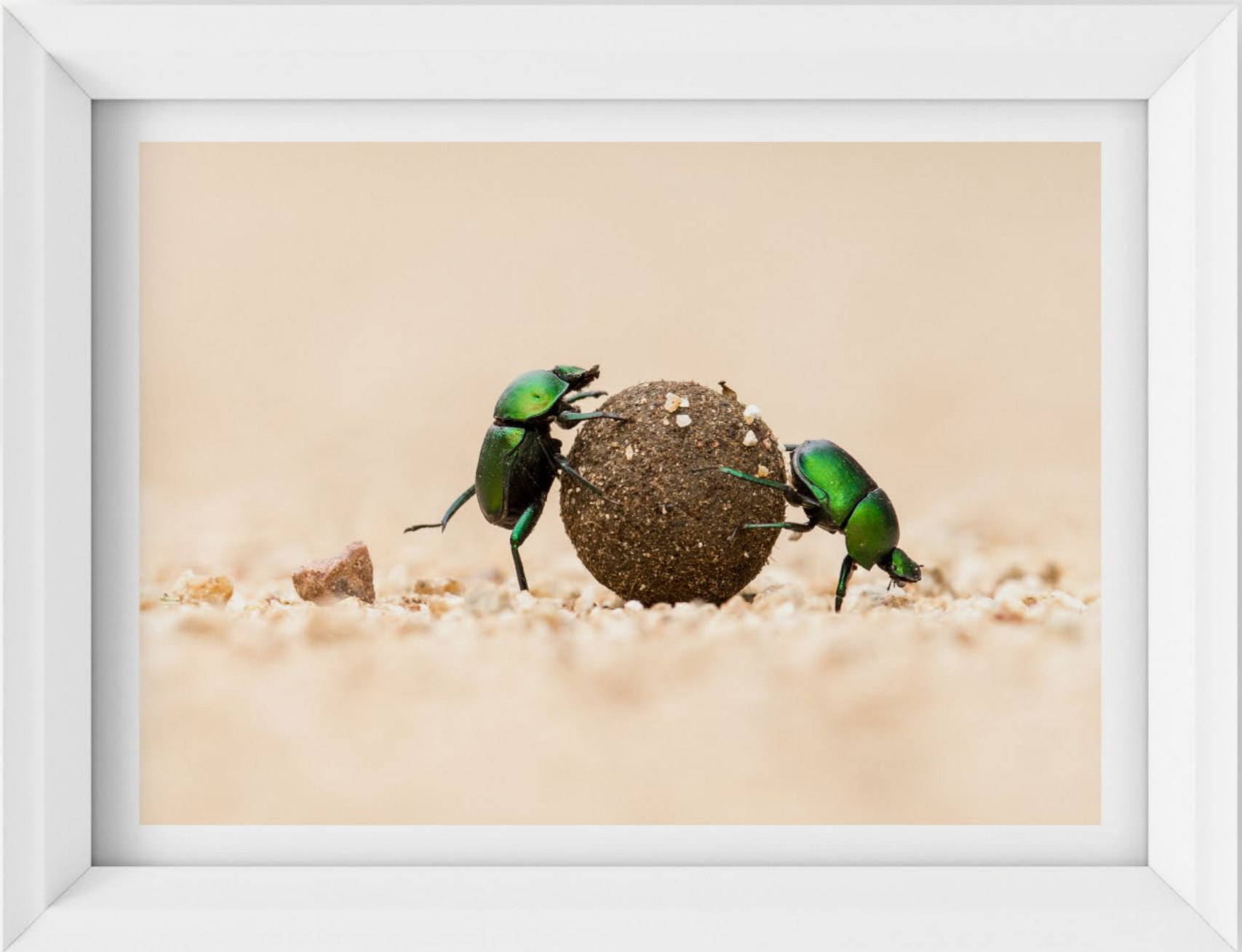
FINE ART PRINTS

The signature series catalogue is a collection of my favourite fine art prints from 2010-2020. Each image has been meticulously selected to meet the highest of print standard. They are a dedication of patience, care, love, and passion, condensed into just 40 fine art photographs. More than just a portfolio, the signature series is the epitome of what drives my love for photographing the natural world.

For this exact reason, all of the photographs in the catalogue are Limited Edition prints of just 30 prints worldwide, plus a single Artist's Proof. The photographs are each professionally printed to the highest exhibition standard on Hahnemühle Foto Rag Fine Art Paper (308Gm).

Purchasing, receiving, and owning a print is more than just a process, it is an experience. It brings back to life a moment in time, and like all fine art investments, it is personal. As a result, all prints are individually signed, numbered, and come with a certificate of authentication.

Selecting a fine art print is a very individual endeavour. Size, framing and display of the images are as important to the process as the print itself. Please do not hesitate to contact me if you would like any advice on what best fits a space, ideas for framing, or simply to learn more about the image. All information on printing, prices, paper, and delivery can be seen at the end of the catalogue. If you would like any guidance on this catalogue, please do not hesitate to get in contact.



THE GUARDIAN

BOTSWANA, 2017

A southern white rhino continues grazing unaware of the bounty on its head, as a western cattle egret searches for insects flushed from the grass. The image is a juxtaposition between dark and light, hope and uncertainty. While the egret takes centre stage the Rhino can be seen fading into the background, indicative of the species' rapid decline.





SPITTING MAD

CHOBE NATIONAL PARK, BOTSWANA 2019

As water levels drop in the Chobe River, tensions begin to rise. Fiercely dominant male hippos defend their patch, as rival males try to secure their own place along the River. Two males try to intimidate each other by opening their mouths wide to display their huge teeth and jaws. As the fight escalates, spit begins to fly and a vocal standoff takes place. When all else fails, fighting begins, at times a deadly exchange.



LION AND THE BUTTERFLY

CHOBE NATIONAL PARK, BOTSWANA 2016

A magical moment as a African monarch butterfly comes eye to eye with a lioness along the banks of the Chobe River. The beautiful cat raised its head to investigate a passing herd of impala, when a butterfly began to fly directly at the lion's face, in repeated aerial dive bombs. The lion simply glared in annoyance each time the defiant butterfly brushed past her whiskers.



YELLOW

WESTERN CAPE, SOUTH AFRICA 2020

A black-headed heron searches for prey in the wildflowers of the Western Cape, South Africa. The Western Cape and Namaqualand are transformed in colour, as a carpet of flowers blanket the land. The annual flower display is a stunning natural wonder, and truly breathtaking to behold. As the flowers lure in insects from far and wide, birds descend on the area in hope of an easy meal.



THE POLLINATORS

WEST COAST NATIONAL PARK, SOUTH AFRICA 2020

A monkey beetle and a tiny collembola meet on a wild daisy. During the annual flower season, the Western Cape is brought to life in colour. Insects are the lifeblood of this transformation, pollinating as they journey from flower to flower. Monkey beetles take advantage of the vast number of spring flowers, which offer an abundant source of pollen to feed on. These flowers act as more than just a source of food, but also as beautiful podiums in which to search for love.



WAR PAINT

CHOBE NATIONAL PARK, BOTSWANA 2019

A large elephant gets agitated at the sight of an incoming herd. Dust flies off its body as it aggressively shakes its ears in disapproval. This war paint is the result of the elephant covering itself in dust, protecting its hide from insects and the intense summer heat in Chobe National Park, Botswana.



DUST AND SHADOWS

CHOBE NATIONAL PARK, BOTSWANA 2019

An African elephant dust baths after a swim in the Chobe River, Botswana. Elephants cover themselves in dust to protect their hides from insects and intense heat during the summer months. The white beach like soil from the riverbed contrasts beautifully with the elephants dark wet skin as it sends plumes of dust into the air.



SPLASH OF COLOUR

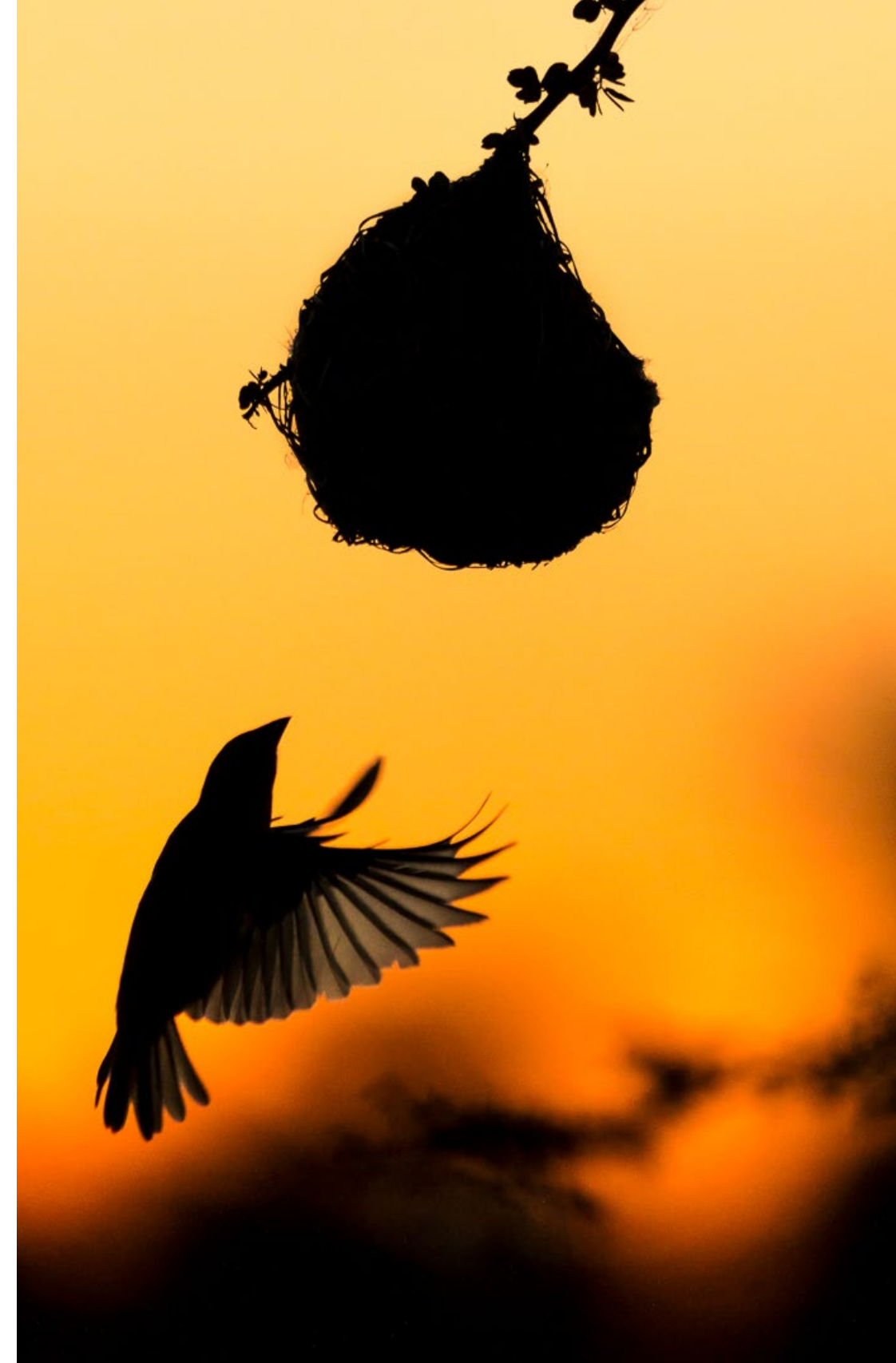
WESTERN CAPE, SOUTH AFRICA 2020

A southern double-collared sunbird feeds on the sap of a Strelitzia flower, native to South Africa. The male, in Eclipse plumage, still displays sections of bright feathers that perfectly mimic those of the stunning flower. These flowers provide sunbirds with a much needed energy supply to rejuvenate after the mating season.

COMING HOME

GABORONE, BOTSWANA 2015

Spring is a time when Southern Africa comes alive. The weavers are one of the most striking symbols of Botswana's spring, their elaborate nests resembling Christmas baubles hanging from nearly every Acacia tree. The setting sun illuminates this creation of labour, as a female Southern Masked Weaver swoops in to assess the males' handiwork.





PORTRAIT OF A QUEEN

CHOBE NATIONAL PARK, BOTSWANA 2016

Occasionally an animal is so powerful and majestic that the only way to properly capture that intensity is to let it speak for itself. This stunning lioness poses stoically in perfect afternoon light on the banks of the Chobe River. A simple yet striking portrait of a beautiful iconic cat.

MY PHOTOGRAPHY

Raised in Botswana, the Kalahari desert was my foundation. As a young boy, my parents would take me on remote camping trips across the country; a truly incredible upbringing. Without it, I believe that my fundamental connection with the African bush would never have formed in the way it did. The dust, the smell, the trees, the heat on my skin, and most importantly, the wildlife!

Growing up I struggled with the education system. It wasn't that I didn't know the answers, I just didn't know why I had to reach them in the same way. Like most kids struggling with linear ways of thinking, art became my focus. Able to express myself in a brand new way, I fell in love with the creative process.

Although I only bought my first camera when I was 20, I have always been intrigued by the beauty of the natural world. Photography instantly became my way of creating art from my surroundings. As my hobby blossomed into a purpose, I began to turn my focus to storytelling. Over this decade behind the camera, I have become obsessed with documenting the intertwined lives of the wildlife around me.

My camera has taken me to some amazing places, enabled me to see breathtaking sights, and helped me meet incredible people along the way. From photographing for projects such as National Geographic's "Savage Kingdom" to being represented in magazines, books, competitions, and exhibitions around the world. For a lot of people work becomes an obsession, for me, my obsession became my work. I am fortunate enough to call photography my career, but first and foremost it is my passion.

It is for that reason that I hope, as my photographic career evolves, so will my conservation purpose. As a wildlife photographer I owe it to my subjects to take on a role of conserving and giving back. I have been fortunate enough to help support several conservation projects with my prints, including the critically acclaimed book series Remembering Wildlife, and the hugely successful Prints for Wildlife initiative.

I have always aspired to align myself with companies that share my desire to help make a difference. With the combined collective effort of photographers from across the globe, I believe that we can inspire people to love and subsequently protect our natural world.





ROLLING STONES

GABORONE GAME RESERVE, BOTSWANA 2015

I have always been intrigued by the small things. The wildlife that goes largely unnoticed. These species often have amazing and complex stories to tell. During the wet season in Botswana there is a scurry of activity, as insects make use of the soft soil. Dung beetles are out in force, searching for and molding dung into perfect spheres. Some are storing food, others creating a safe place for their young. As it moves its prize, the wet dung collects tiny stones.



HIGH VISIBILITY JACKETS

GABORONE GAME RESERVE, BOTSWANA 2020

A pair of tiny dung beetles join forces to roll a ball of dung across the rough ground. These hard working insects are more complex than they may initially appear, having the power to navigate by the Milky Way, making them the first known species to do so. The tiny insects can orient themselves to the bright strip of light generated by the galaxy, and then move in a line relative to it. It is hardly surprising that the ancient Egyptians revered these beautiful bugs, believing they rolled the sun through the sky as if it were a giant ball of dung.



DAYCARE

CHOBE NATIONAL PARK, BOTSWANA 2019

A chacma baboon plays with a young baby on the banks of the Chobe River. Just like humans, young babies are a great source of entertainment for all members in the troop. While the adult proudly holds up the youngster for all to see - the baby isn't as enthusiastic about the ordeal.

WILLIAM STEEL PHOTOGRAPHY



LOVE

CHOBE NATIONAL PARK, BOTSWANA 2019

Intimate moments often make for the most captivating images. Some of the most emotive scenes, are when we see in wildlife behaviour that we identify in ourselves. For that reason, it is unsurprising that primates are one of my favourite subjects. Caring, complex, and expressive, they provide endless photographic opportunities.

SIGNATURE SERIES



EVERY DROP

KASANE FOREST RESERVE, BOTSWANA 2015

An elephant lifts its trunk up from drinking, cautiously focusing all its senses on an incoming herd. I have always tried to find new and unique compositions of common subjects, I love the challenge of capturing emotion even in the tiniest of details. The longer you spend with a subject the more these opportunities present themselves.



EVER DECREASING CIRCLES

CHOBE NATIONAL PARK, BOTSWANA 2019

I am always searching for symbolism in nature. Moments that inadvertently tell a greater story than they initially let on. Water is the base for everything, the first drop that sets in motion the circle of life. A resource, a commodity, and a luxury. As an elephant drinks from the Chobe River, a drop of water falls from its tusk, the appendage that is the very reason for this species persecution.



RACING STRIPES

CENTRAL BOTSWANA 2017

Zebra, excited by early rains, chase each other across an open pan. Racing Stripes sat undiscovered in my archives for over five years. It is hard to believe this image was missed, but as my photography has changed and developed over the years, so has my artistic style. I truly believe that this image now has a firm place in my catalogue.



ZEBRA CROSSING

Khama Rhino Sanctuary, Botswana 2016

A zebra sends plumes of dust into the air as the sun sets over a waterhole in the Khama Rhino Sanctuary. As the dry season takes hold of Botswana, wildlife is forced to share the ever decreasing water supplies. Dust baths are a great way to pass the time as you wait in line.



MEETING PLACE

CHOBE NATIONAL PARK, BOTSWANA 2019

Rivers are not only places for elephants to drink and bathe, they are often somewhere to socialise. From a boat on the river, it is incredible to watch the many interactions as herds meet along the banks of the Chobe. Heirarchies are very important, those who are forced to wait in line, cover themselves in dust to protect them from the midday sun.



JUDGMENT

KHUTSE GAME RESERVE, BOTSWANA 2018

Khutse Game Reserve holds a special place in my heart, many a trip have left a lasting impression on me. One summer, as the oppressive heat took hold, a pride of lion chose to stakeout one of the park's waterholes. Camping nearby, these curious cats would check up on me every morning and evening, making for some memorable standoffs.

REFLECTION

ETOSHA NATIONAL PARK, NAMIBIA 2016

At Moringa waterhole in Etosha National Park, a black rhino silently appears out of the darkness. The sun had dropped below the horizon, and only the reflected light from the sky illuminated the water. Like an apparition, the unmistakable shape appeared on the water. The image was later rotated 180 degrees, giving the impression of the reflection being the rhino itself. This lone form, only a reflection of its real self, is a daunting symbol for the troubled future of the species.



DESERT NOMADS

I love to tell a story with my photography. To capture a mood, to set a scene, and to evoke an emotion. So often I find the images that best achieve these goals, are the ones that you feel connected to the environment. They are the wider shots, they are the intimate moments, and most importantly they guide you into that subject’s world.

Hiking through Namibia’s Sand Sea, it is easy to feel like a stranger, in this land that we are not equipped to survive. The Namibian Landscape is achingly beautiful in its vast desolation, it is hard to believe anything can survive in this harsh and barren land.

Something ever present in the Namib desert is the scale and drama. Rolling mountains of sand and never ending skies, the desert’s wildlife is dwarfed by this imposing and unforgiving land. To walk through the burning hot dunes, chasing shadows and tracks, is an incredible otherworldly experience.

Gemsbok are the true desert nomads, not only able to survive, but thrive in this sea of sand. In fact they can go their entire life without tasting water on their lips, a true example of a species perfectly adapted for its environment. With very little food and no permanent water source, the gemsbok are forced to make daily journeys, carving tracks into the hot sand as they search for a reprieve in the valleys that snake between the dunes.

“Desert Nomads” is an ongoing series documenting the incredible lives of one of the world’s most desert-adapted animals.



KING OF THE DUNES



HEAD IN THE CLOUDS



SHADES OF GREY



THE DESCENT



WAVES OF SAND



RED, WHITE, AND BLACK

GABORONE GAME RESERVE, BOTSWANA 2020

A black-winged stilt feeds in the shallows of a small dam in the Gaborone Game Reserve. The calm water reflects the stilt as it slowly makes its way across the water, long legs are a key tool for the job. The emphasis is on shape and form, highlighting the unique features that make the stilt such a visually iconic bird.



GRASSLAND

MABUASEHUBE, BOTSWANA 2018

I have always been obsessed the way a subject exists within its environment. When a cheetah moves throughout the vegetation, the grass bends and then falls back into place, showing no evidence of this brief interaction. The art of movement is a beautiful ballet of action and reaction. The natural world is so perfectly intertwined that it is easy to forget how important the environment’s role is to a subject.



LOCKDOWN

WESTERN CAPE, SOUTH AFRICA 2020

For many people around the world, a large part of 2020 was spent in lockdown. As a result, this would be the longest time I have spent at home in the last ten years. Every morning this Karoo prinia would search for insects in the security gate at my front door. The insects, drawn in by the outside light, proved an easy meal for this clever bird. Adaption is the key to survival in an urban environment, for humans and wildlife alike.



MARSH PRIDE

SAVUTI, BOTSWANA 2018

After spending two years following Savuti’s Marsh Pride documenting the Savage Kingdom series for National Geographic, it was hard not to be emotionally invested in their story. Every time I return to the park, it is like reconnecting with old friends. While their constant conflict continues to challenge the pride dynamics, strong bonds mean they are still intimately connected to one another.



RAINBOW PRIDE

KHUTSE GAME RESERVE, BOTSWANA 2018

As clouds roll across the dry Kalahari, the rain brings a welcome reprieve from the scorching heat. As each drop falls and begins to cool the earth, the pride becomes active. Rain is such a rarity in this part of Botswana, that even the lions, who often avoid water at all cost, greet the imminent storm with excitement.



UNDER THE TUSK

CHOBE NATIONAL PARK, BOTSWANA 2019

I have an immense love for elephants. Out of all the large African mammals, the connection you get when face to face with an elephant is unmatched. The intelligence and expression of these gentle giants lend themselves to amazing photographic opportunities. Sadly, they are also one of the most persecuted. The same tusk that this young elephant seeks shelter under, is the reason for their struggle.



SIDE BY SIDE

CHOBE NATIONAL PARK, BOTSWANA 2020

Family is as important to elephants as it is to us. A visit to the River is an opportunity for young elephants to socialise and play. These two young calves spent most of the afternoon fighting in, and on the banks of the mighty Chobe River. When it was finally time to leave, they needed a bit of encouragement from their mothers trunks to guide them on their way.



BEFORE THE STORM

ETOSHA NATIONAL PARK, NAMIBIA 2018

A giraffe makes its way across Fishers’ Pan in Etosha National Park as a dramatic storm approaches. The smell of petrichor fills the air, as the first rains of the season touch the dry earth, a welcome relief from the debilitating drought. The vast African landscape, and the world’s tallest mammal, are both dwarfed by this incredible sky. As the seasons change, the rain brings with it new life.



PAINTED WOLF

KHWAI PRIVATE RESERVE, BOTSWANA 2019

A beautiful African wild dog attentively listens to the calls of another pack member. The large rounded ears lined with numerous muscles, work as large satellite dishes, picking up the most subtle sound waves. Communication is key to their hunting technique; the pack constantly let one another know both their location, as well as that of their prey. Making the African wild dog one of the most successful predators in Africa.



SLOW STREET

WESTERN CAPE, SOUTH AFRICA 2020

A snail makes its way down a lamp post while illuminated by the street lights behind. These urban residents are a familiar sight for most neighbourhoods, but they are so often overlooked. As the sun begins to rise the snail searches for a suitable place to shelter.



LIGHTS ON THE SEA

WESTERN CAPE, SOUTH AFRICA 2016

A Cape cormorant’s unmistakable outline can be seen as it poses on a rocky ledge overlooking the Atlantic Ocean. Photographed into the sun, the cormorant is back lit by beautiful orbs of reflected light bouncing off of the seaweed behind.



THE KING

MABUASEHUBE, BOTSWANA 2018

Lions are the proud symbol of Africa, and black maned lions the iconic species of the Kalahari. They are the epitome of tough and resilient. In order to capture an image that does this noble cat justice, it was important to immortalise its stoic form. From a low angle, you really get a sense of power and strength, looking up at the king of Africa.

WILLIAM STEEL PHOTOGRAPHY



KALAHARI LIGHT

MABUASEHUBE, BOTSWANA 2018

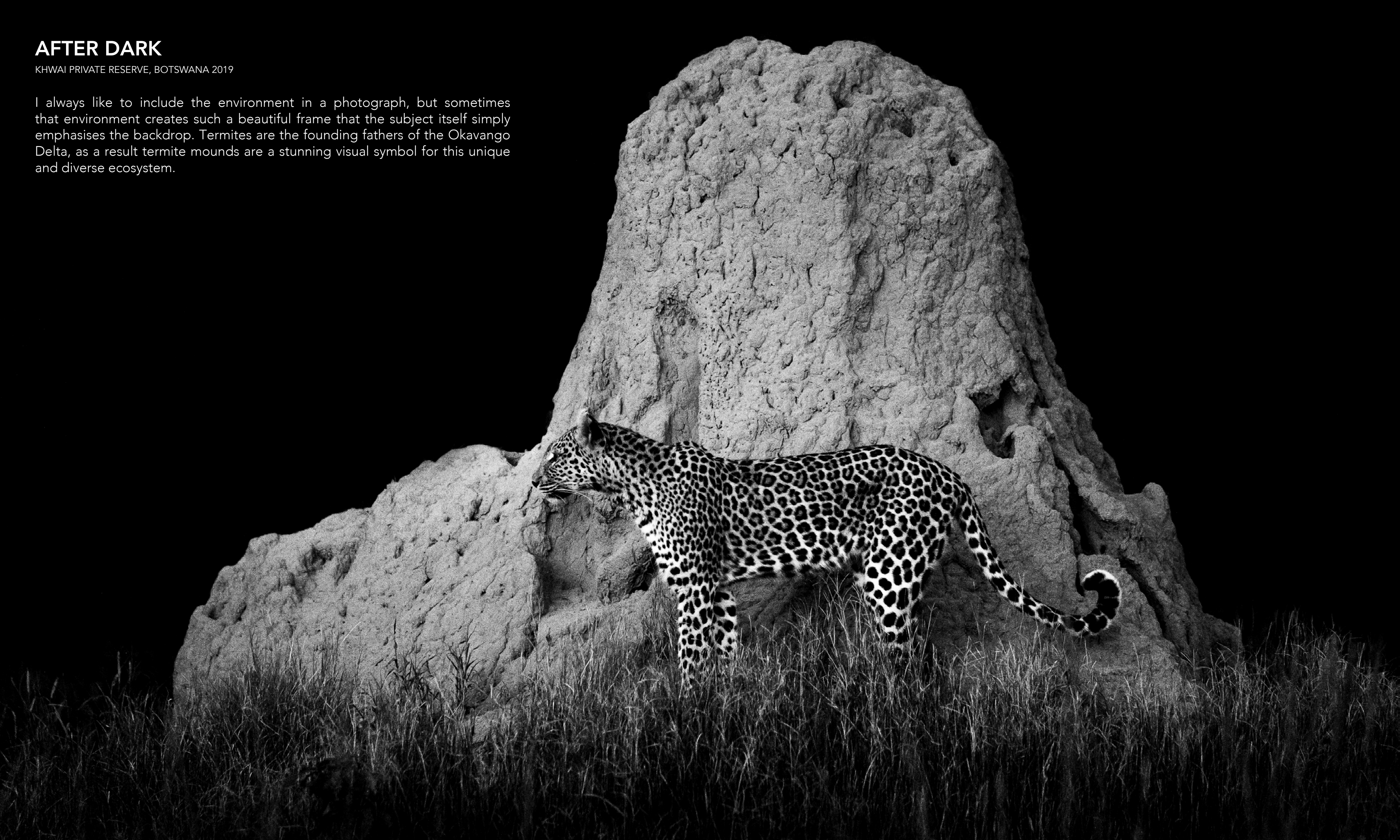
No morning in the bush is ever the same, and the unknown expectation of the day ahead always heightens my senses. On this particular morning faint calls from a lone male lion woke me at four am. I got up, made tea, and sat on the roof of my car for the next two hours as the calls intensified. As the sun threatened to break past the horizon, I snaked my way along a winding dirt road in the direction of the booming calls. As I turned a final sandy corner, I was met by the powerful rim lit prowess of this incredible black maned lion. Some moments take your breath away by their drama, others by their sheer beauty.

SIGNATURE SERIES

AFTER DARK

KHWAI PRIVATE RESERVE, BOTSWANA 2019

I always like to include the environment in a photograph, but sometimes that environment creates such a beautiful frame that the subject itself simply emphasises the backdrop. Termites are the founding fathers of the Okavango Delta, as a result termite mounds are a stunning visual symbol for this unique and diverse ecosystem.



PRICES

An image has the power to change the feel of a room, and I am constantly grateful to those that choose to adorn their walls with my work. With a focus on quality, emotion, and connection, this catalogue seeks to epitomise fine art photography, making for dramatic statement pieces for any home.

The prints are available in four sizes; 40cm, 60cm, 80cm and 100cm, measured from the longest edge. Once an edition has sold out, there won't be any more made available. In line with limited edition artworks, as available editions decrease, their collectability increases. As a result, prices for any given print may increase accordingly. Starting prices for each size are listed below;

40cm	\$400
60cm	\$500
80cm	\$600
100cm	\$700

Please feel free to get in contact if you need any help with sizing. If you have a specific space in mind for the print, the size can be adapted to fit your needs.

If available an entire limited edition can be purchased, as a result, owning the only photograph of its kind in the world. Provided that it has not already been sold, the cost for an exclusive buyout is \$12 000. As a result, you will own the only fine art print of its kind, and the image will be numbered 1 of 1.

** Each print is made with a wide paper border surrounding, to allow the framer to handle the print, and for added edge protection during transport.*

** Pricing for print only. Framed prints are not available for purchase online, but may be available depending on delivery details.*

** If you order three or more prints at one time, you will automatically receive a 15% discount.*

DELIVERY

Shipping is available worldwide to most destinations. Your print is shipped rolled in a cardboard sleeve, and carefully wrapped in tissue paper. Once your order has been processed and shipped you will receive an email with your tracking number.

HAHNEMUHLE FOTO RAG FINE ART PAPER 308GM


After seven years of testing and trialing nearly every available fine art paper, I am so happy with the final results that I get from Hahnemühle Foto Rag Fine Art Paper (308Gm). Hahnemühle has been making paper for more than 400 years, and there is a reason that their papers are revered the world over.

Hahnemühle Photo Rag is one of the world's most popular papers and the valued all-rounder for high-quality FineArt printing. The white cotton artist's paper, with its characteristic, wonderfully soft feel, boasts a three-dimensional appearance and impressive pictorial depth. Combined with the matt premium inkjet coating, this paper produces outstanding prints that feature brilliant colours, deep blacks, striking contrasts and perfect reproduction of detail. Something I find imperative to making an image come alive on paper. This acid and lignin-free classic meets the most exacting requirements for age resistance and is specially designed for FineArt applications. Hahnemühle Photo Rag is the ideal combination of structure, print quality and weight.


CERTIFICATES OF AUTHENTICATION

With all prints I provide a Hahnemuhle fine art certificate of authentication with an embedded watermark. The certificate has a numbered hologram which corresponds with the identical hologram that is placed on the back of the print.

CONTACT DETAILS

 <https://www.williamsteelphotography.com/>

 williamsteelphotography@gmail.com

 +267 72458330

 [Find out more about my work](#)